

CAREER & COLLEGE PATHWAYS

The following Career and College Pathways are designed to focus student course selections and connect students to a viable career and/or a post-secondary program of study. The six (6) Career and College Pathways are aligned to Pennsylvania's sixteen (16) Career Clusters. This section of our Program of Studies connects Career and College Pathways with our current course offerings. Career options and recommended courses are outlined in each Career and College Pathway.

1

Arts, Communications
and Hospitality

2

Business Administration
and Finance

3

Education, Human and
Public Services

4

Engineering,
Manufacturing
Technology and Trades

5

Health and
Natural Sciences

6

Information Technology

ALIGNED PA CAREER CLUSTERS

Arts, Communications and Hospitality

- Arts, A/V Technology & Communication
- Hospitality & Tourism

1

Business Administration and Finance

- Business & Administration
- Finance & Insurance
- Marketing Sales & Service

2

Education, Human and Public Services

- Government & Public Administration
- Law & Public Safety
- Education & Training
- Human Services

3

Engineering, Manufacturing Tech. and Trades

- Architecture & Construction
- Manufacturing
- Transportation, Distribution, & Logistics
- Scientific Research/Engineering

4

Health and Natural Sciences

- Health Science
- Agriculture, Food & Natural Resource

5

Information Technology

- Information Technology

6

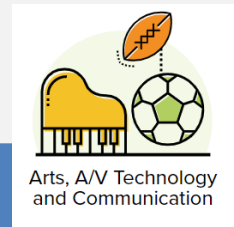


CAREER AND COLLEGE PATHWAYS

Arts, Communications and Hospitality

Associated Careers

- Director - Art, Film, Music, Talent, Media
- Editor - Film, Video, Book, Newspaper
- Performer - Actor/ess, Musician/Singer
- Graphic Design – Arts & Production Technology
- Photographer
- Writer/Author/Journalist
- Fashion Designer
- Broadcasting Technicians - Audio/Video, Sound
- Artist



Arts, A/V Technology & Communication

Associated Careers

- Food Service Manager
- Culinary - Chef, Baker, Cook, Waiter
- Athlete
- Travel Agent
- Lodging Manager
- Concierge
- Sport Official
- Housekeeping
- Custodial Worker
- Amusement & Recreation



Hospitality & Tourism

Arts, Communications and Hospitality

Example Careers CONNECTED WA PROGRAMS	RECOMMENDED COURSES			
	9	10	11	12
Director (Art, Film, Music, Talent, Media)	Media Arts Tech Theatre: Set Building Tech Theatre: Crew	Business Mgmt & Ldrshp Tech Theatre: Set Building Tech Theatre: Crew	Creative Writing ^C Marketing Tech Theatre: Set Building Tech Theatre: Crew	Film Studies ^C 3D Modeling & Animation Tech Theatre: Set Building Tech Theatre: Crew
Editor (Film, Video, Book, Newspaper)	Media Arts	Yearbook	Creative Writing ^C	Journalism ^C Oral Communications ^C Film Studies ^C
Writer/Author/Journalist AP CAPSTONE DIPLOMA PROGRAM	AI Adventures Honors English 9 ^C	Honors English 10 ^C AP Seminar ^C	AP Eng Lang & Com ^C AP Research ^C Creative Writing ^C	AP Eng Lit & Comp ^C Classic & Modern Lit ^C Oral Communications ^C Film Studies ^C Gothic Literature (WAVA)
Performer (Actor/ess, Musician/Singer)	Band Chorus Dance Guitar Piano	Wind Ensemble Show Choir Dance Company Guitar Piano	Wind Ensemble Show Choir Dance Company Guitar Piano Digital Audio Prod 1 Vocal Studies Jazz Studies	Oral Communications ^C Film Studies ^C Wind Ensemble Show Choir Dance Company Guitar Piano Digital Audio Prod 2 Vocal Studies Jazz Studies Music Apprec (WAVA)
Graphic Design/Arts & Production Technology PARKWAY: GRAPHICS DESIGN & PRODUCTION TECHNOLOGY ECIHS-CCAC: MULTIMEDIA PROGRAMMING, SIMULATION & GAMING	IT Fundamentals Intro to Game Design Art 1 Media Arts Graphic Arts & Production Technology (Pkwy)	3D Modeling & Animation AP Computer Science Prin ^C Art 2 Graphic Arts & Production Technology (Pkwy)	2D/3D Game Develop ^C AP Computer Science A ^C Art 3 Graphic Arts & Production Technology (Pkwy)	Game Prod & Marketing ^C Virtual Reality ^C Programming in C# & C++ ^C Honors Art 4 AP Drawing Graphic Arts & Production Technology (Pkwy)
Artist	Art 1 Media Arts Intro to Game Design AI Adventures	Art 2 Ceramics 1 AP Computer Science A ^C Art Appreciation (WAVA)	Art 3 Advanced Ceramics 2 2D/3D Game Development 3D Modeling & Animation Graphic Dsgn 1&2 (WAVA)	Honors Art 4 AP Drawing DIY Virtual Reality ^C
Technicians (Audio/Video, Sound)	Tech Theater: Set Building Tech Theater: Crew AI Adventures	Tech Theater: Set Design Tech Theater: Crew Digital Audio Prod 1	Tech Theater: Set Design Tech Theater: Crew Digital Audio Prod 2	Film Studies ^C Tech Theater: Set Design Tech Theater: Crew
Food Service/Culinary (Chef, Baker, Cook, Manager, Waiter) PARKWAY: CULINARY ARTS	Culinary Arts (Pkwy)	Marketing Culinary Arts (Pkwy)	Exploring Foods Business Mgmt & Ldrshp Financial Accounting Culinary Arts (Pkwy)	West A Café Managerial Accounting Funct Nutrition & Health ^C Culinary Arts (Pkwy)

The above chart provides recommended elective courses for career fields aligned to the 16 PA Career Clusters. Please keep in mind these are recommendations and not an exhaustive list. In addition to these recommendations, students are required to complete the core course requirements for graduation - 4 courses in each of the 4 core areas unless a student elects to attend PWCTC in which case they must successfully complete 4 courses in English & Math and 3 courses in Science & Social Studies. Courses denoted by ^C count as a core class. Please reference page 6 for a full list of core courses available by grade level in alignment with our graduation requirements.



CAREER AND COLLEGE PATHWAYS

Business Administration and Finance

Associated Careers

- Investment Fund Manager
- Patient Representative
- Human Resources
- Training and Development Specialist
- Chief Executive Officer
- Purchasing Manager
- Analyst - Operation Research, Management, Compensation, Benefits & Jobs, Budget

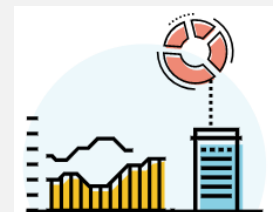


Business and Administration

Business & Administration

Associated Careers

- Financial Manager/Advisor
- Actuary
- Budget Analyst
- Insurance Underwriter & Appraiser
- Insurance Claims and Policy Processor
- Loan Officer
- Credit Analyst
- Bank Teller
- Tax Preparer
- Accountant/Auditor

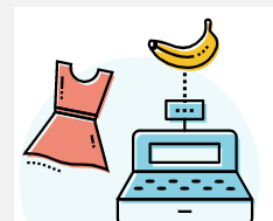


Finance and Insurance

Finance & Insurance

Associated Careers

- Sales Manager
- Sales Engineer
- Medical Sales
- Real Estate Broker/Agent
- Telemarketer
- Public Relations
- Marketer – Analyst, Manager, Specialist



Marketing Sales and Service

Marketing Sales & Service

Business Administration and Finance

Example Careers CONNECTED WA PROGRAMS	RECOMMENDED COURSES			
	9	10	11	12
Analyst (Operation Research, Management, Compensation, Benefits, & Jobs, Budget) ECIHSA-RMU: BUSINESS	IT Fundamentals Principles of Business AI Adventures	Business, Law, & Society ^C Intro to Data Analytics ^C AP Computer Science Prin ^C	Financial Accounting ^C Marketing AP Computer Science A ^C Computer Networking	Managerial Accounting ^C Business Mgmt & Ldrshp Programming in C# & C++ ^C AP Statistics ^C AP Economics ^C Oral Communications ^C
Investment Fund Manager ECIHSA-RMU: BUSINESS	IT Fundamentals Principles of Business	Business, Law, & Society ^C Intro to Data Analytics ^C	Financial Accounting ^C Marketing Personal Finance ^C	Managerial Accounting ^C Business Mgmt & Ldrshp AP Economics ^C Oral Communications ^C
Human Resources ECIHSA-RMU: BUSINESS	IT Fundamentals Principles of Business	Business, Law, & Society ^C Intro to Data Analytics ^C	Financial Accounting ^C Marketing	Managerial Accounting ^C Business Mgmt & Ldrshp Oral Communications ^C
Financial Manager/Advisor ECIHSA-RMU: BUSINESS	IT Fundamentals Principles of Business	Business, Law, & Society ^C Intro to Data Analytics ^C	Financial Accounting ^C Marketing Personal Finance ^C	Managerial Accounting ^C Business Mgmt & Ldrshp Oral Communications ^C
Accountant/Auditor ECIHSA-RMU: BUSINESS	IT Fundamentals Principles of Business	Business, Law, & Society ^C Intro to Data Analytics ^C	Financial Accounting ^C Marketing Personal Finance ^C	Managerial Accounting ^C Business Mgmt & Ldrshp Oral Communications ^C
Actuary ECIHSA-RMU: BUSINESS	IT Fundamentals Principles of Business	Business, Law, & Society ^C Intro to Data Analytics ^C	Financial Accounting ^C Marketing Personal Finance ^C	Managerial Accounting ^C Business Mgmt & Ldrshp
Loan Officer ECIHSA-RMU: BUSINESS	IT Fundamentals Principles of Business	Business, Law, & Society ^C Intro to Data Analytics ^C	Financial Accounting ^C Marketing	Managerial Accounting ^C Business Mgmt & Ldrshp Oral Communications ^C AP Statistics ^C
Marketing (Analyst, Manager, Specialist) ECIHSA-RMU: BUSINESS	IT Fundamentals Principles of Business Art 1 Media Arts AI Adventures	Business, Law, & Society ^C Art 2 Graphic Dsgn 1&2 (WAVA)	Financial Accounting ^C Marketing Art 3 3D Modeling & Animation	Managerial Accounting ^C Business Mgmt & Ldrshp Oral Communications ^C Honors Art 4 AP Drawing
Sales Engineer WA-GACC: PRE-APPRENTICESHIP	Elect. & Mech. Sys. Manufacturing 1 IT Fundamentals	Digital Electronics	Power Systems	Fluid System Pre-apprenticeship (through GACC)
Medical Sales ECIHSA-RMU: BUSINESS	IT Fundamentals Principles of Business	Business, Law, & Society ^C	Financial Accounting ^C Marketing AP Biology ^C	Managerial Accounting ^C Business Mgmt & Ldrshp Oral Communications ^C Anatomy & Physiology ^C
Patient Representative/Medical Concierge	IT Fundamentals Principles of Business	Business, Law, & Society ^C	Financial Accounting ^C Marketing	Managerial Accounting ^C Business Mgmt & Ldrshp Oral Communications ^C
Sport Manager ECIHSA-RMU: BUSINESS (SPORT MGMT CONCENTRATION)	Principles of Business Sport Management	Business Mgmt & Ldrshp Marketing	Business, Law, & Society ^C Financial Accounting ^C	Managerial Accounting ^C Oral Communications ^C

The above chart provides recommended elective courses for career fields aligned to the 16 PA Career Clusters. Please keep in mind these are recommendations and not an exhaustive list. In addition to these recommendations, students are required to complete the core course requirements for graduation - 4 courses in each of the 4 core areas unless a student elects to attend PWCTC in which case they must successfully complete 4 courses in English & Math and 3 courses in Science & Social Studies. Courses denoted by ^C count as a core class. Please reference page 6 for a full list of core courses available by grade level in alignment with our graduation requirements.



CAREER AND COLLEGE PATHWAYS

Education, Human and Public Services

Associated Careers

- Legislator
- Financial Examiner
- Postal Service
- Court & Municipal Clerk
- Coroner
- TSA Screener
- Equal Opportunity Representative
- Inspector – Transportation, Aviation, Environmental, Building
- Military



Government and Public Administration

Government & Public Administration

Associated Careers

- Lawyer, Judge/Magistrate
- Intelligence Analyst
- Forensic Science Technician
- Firefighter
- Paralegal, Court Reporter
- Fish & Game Warden
- Animal Control
- Security Guard
- Lifeguard
- Examiner, Abstractor, Searcher
- Police Officer, Detective, Criminal Investigator



Law and Public Safety

Law & Public Safety

Associated Careers

- Teacher
- Professor
- School Administrator
- Librarian
- Curator
- Interpreter, Translator
- Museum Technician & Conservator
- School & Career Counselor



Education and Training

Education & Training

Associated Careers

- Psychologist - Industrial, Clinical, Neuro
- Funeral Home Managers & Morticians
- Therapist - Marriage, Family, Massage
- Counselor - Mental Health/Rehabilitation
- Social Worker
- Loan Officer
- Child Care
- Clergy
- Cosmetologist/Barber/Beautician



Human Services

Human Services

Education, Human and Public Services

Example Careers CONNECTED WA PROGRAMS	RECOMMENDED COURSES			
	9	10	11	12
Early Childhood Education ECIHSA-RMU: EARLY CHILDHOOD EDUCATION	IT Fundamentals	Family & Com Relations Partners in Phys Ed ^C	Child Development 1 Partners in Explor Foods AP Psychology ^C AP Eng Lang & Comp ^C	Child Development 2 Tech for Aspir Teach AP Economics ^C Oral Communications ^C
Special Education ECIHSA-RMU: SPECIAL EDUCATION	IT Fundamentals	Partners in Phys Ed ^C	Child Development 1 Partners in Exploring Foods AP Psychology ^C AP Eng Lang & Comp ^C	Child Development 2 West A Café Tech for Aspir Teach Oral Communications ^C
General Education AP CAPSTONE DIPLOMA PROGRAM ECIHSA-RMU: SPECIAL EDUCATION	IT Fundamentals	Family & Com Relations Partners in Phys Ed ^C	Partners in Exploring Foods AP Psychology ^C AP Eng Lang & Comp ^C	Tech for Aspir Teach Oral Communications ^C an AP Science course
Cosmetology (Barber/Beautician) PARKWAY: COSMETOLOGY	Cosmetology (Pkwy)	Cosmetology (Pkwy)	Cosmetology (Pkwy)	Oral Communications ^C Cosmetology (Pkwy)
Criminal Justice Field (Lawyer, Police Officer, Forensic Scientist) PARKWAY: PUBLIC SAFETY TECHNOLOGY AP CAPSTONE DIPLOMA PROGRAM JROTC PROGRAM ECIHSA-RMU: CYBERSECURITY ECIHSA-RMU: CRIMINAL JUSTICE & PRELAW	IT Fundamentals JROTC 1 Public Safety Technology (Pkwy)	Cybersecurity JROTC 2 AP US Government ^C Criminal Justice ^C AP Seminar ^C Family & Com Relations Public Safety Technology (Pkwy)	Computer Networking JROTC 3 Corrections & Social Issues ^C Business, Law, & Society ^C AP Research ^C Child Development 1 Public Safety Technology (Pkwy)	JROTC 4 ^C AP Psychology ^C Forensic Science ^C Oral communications ^C Public Safety Technology (Pkwy)
Firefighter/EMS PARKWAY: PUBLIC SAFETY TECHNOLOGY	Public Safety Technology (Pkwy)	Public Safety Technology (Pkwy)	AP Biology ^C Public Safety Technology (Pkwy)	Anatomy & Physiology ^C Public Safety Technology (Pkwy)
Psychologist (Industrial, Clinical, Neuro) AP CAPSTONE DIPLOMA PROGRAM	Principles of Business IT Fundamentals	AP Seminar ^C Partners in Phys Ed ^C	AP Research ^C Child Development 1 AP Biology ^C	AP Psychology ^C Family & Com Relations Anatomy & Physiology ^C
Military JROTC PROGRAM ECIHSA-RMU: CYBERSECURITY ECIHSA-RMU: CRIMINAL JUSTICE & PRELAW	JROTC 1 Physical Conditioning IT Fundamentals	JROTC 2 Physical Conditioning Cybersecurity	JROTC 3 Criminal Justice ^C Physical Conditioning Computer Networking	JROTC 4 ^C Corrections & Social Issues ^C Oral Communications ^C Physical Conditioning

The above chart provides recommended elective courses for career fields aligned to the 16 PA Career Clusters. Please keep in mind these are recommendations and not an exhaustive list. In addition to these recommendations, students are required to complete the core course requirements for graduation - 4 courses in each of the 4 core areas unless a student elects to attend PWCTC in which case they must successfully complete 4 courses in English & Math and 3 courses in Science & Social Studies. Courses denoted by ^C count as a core class. Please reference page 6 for a full list of core courses available by grade level in alignment with our graduation requirements.



CAREER AND COLLEGE PATHWAYS

Engineering, Manufacturing Technology, and Trades

Associated Careers

- Civil Engineer
- Architect
- Interior Designer
- Construction Manager/Worker
- Iron & Steel Worker
- Transportation Engineer
- Mason
- Carpenter
- Drafter
- Roofer
- Electrician
- Plumber
- HVAC Technician
- Landscaping & Groundskeeping
- Solar Energy Installation
- Assistant - Plumber, Pipefitter, Steamfitter, Pipelayer



Architecture and Construction

Architecture & Construction

Associated Careers

- Power Distributor & Dispatcher
- Industrial Engineer Technologist
- Power/Chemical/Gas Plant Operator
- Welder
- Security & Fire Alarm Systems
- Radio/Cellular/Tower Equipment Installer & Reclamation Worker
- Mechatronics Technologist

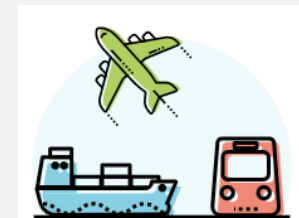


Manufacturing

Manufacturing

Associated Careers

- Air Traffic Controller
- Aerospace Manager
- Pilot
- Water Vessel Operator
- Railroad Engineers/Operator
- Autobody Collision Repair
- Mass Transit Operator
- Industrial Truck & Tractor Operator
- Automotive & Diesel Technician
- Mechanic - Aircraft, Automotive



Transportation, Distribution, and Logistics

Transportation, Distribution, & Logistics

Associated Careers

- Bio Fields - Biofuels, Biodiesel, Biochemist, Biophysicist
- Engineer - Aerospace, Nuclear, Computer, Petroleum, Chemical, Electrical, Robotics, Mechatronics, Energy, Civil, Industrial
- Mathematician/Statistician
- Cartographer
- Urban and Regional Planner
- Environmental Scientist



Scientific Research/Engineering

Scientific Research/Engineering

Engineering, Manufacturing Technology and Trades

Example Careers CONNECTED WA PROGRAMS	RECOMMENDED COURSES			
	9	10	11	12
Engineer (Aerospace, Nuclear, Computer, Petroleum, Chemical, Electrical, Robotics, Mechatronics, Energy, Civil, Industrial) ECIHSR-RMU: ENGINEERING	Principles of Technology Elect. & Mech. Sys. Manufacturing 1 IT Fundamentals	Intro to Engineering Draw & Design Engr & Arch Marketing	CADD 2 Business Mgmt & Ldrshp Financial Accounting ^C AP Calculus AB ^C AP Physics 1 ^C	Engineering Materials Program in C# & C++ ^C AP Economics ^C AP Calculus BC ^C AP Physics 2 ^C
Mechatronics Technician ECIHSR-CCAC: MECHATRONICS TECHNOLOGY	Principles of Technology Elect. & Mech. Sys.	Digital Electronics Manufacturing 1	Power Systems Man Tech 2	Fluid System DIY
Electrician PARKWAY: ELECTRICAL SYSTEMS TECHNOLOGY ECIHSR-RTC: CONSTRUCTION ELECTRICITY TECHNOLOGY ECIHSR-RTC: INDUSTRIAL ELECTRICITY TECHNOLOGY	Electrical Systems Technology (Pkwy)	Electrical Systems Technology (Pkwy)	Electrical Systems Technology (Pkwy)	ECIHSR-RTC: Construction or Industrial Electricity Technology
Welder PARKWAY: WELDING TECHNOLOGY ECIHSR-RTC: WELDING TECHNOLOGY	Welding (Pkwy)	Welding (Pkwy)	Welding (Pkwy)	ECIHSR-RTC: Welding Technology
HVAC Technician PARKWAY: HVAC/R ECIHSR-RTC: HVAC TECHNOLOGY	HVAC/R (Pkwy)	HVAC/R (Pkwy)	HVAC/R (Pkwy)	ECIHSR-RTC: HVAC Technology
Automotive Technician PARKWAY: AUTOMOTIVE TECHNOLOGY ECIHSR-RTC: AUTOMOTIVE TECHNOLOGY	Automotive Technology (Pkwy)	Automotive Technology (Pkwy)	Automotive Technology (Pkwy)	ECIHSR-RTC: Automotive Technology
Autobody Collision Repair PARKWAY: AUTOBODY REPAIR ECIHSR-RTC: AUTOMOTIVE TECHNOLOGY	Autobody Repair (Pkwy)	Autobody Repair (Pkwy)	Autobody Repair (Pkwy)	ECIHSR-RTC: Collision Repair Technology
Diesel Technician PARKWAY: DIESEL TECHNOLOGY ECIHSR-RTC: DIESEL TECHNOLOGY	Diesel Technology (Pkwy)	Diesel Technology (Pkwy)	Diesel Technology (Pkwy)	ECIHSR-RTC: Diesel Technology
Air Traffic Controller ECIHSR-CCBC: AIR TRAFFIC CONTROLLER	Principles of Business	Cybersecurity Computer Networking	AP English Lang & Comp ^C ECIHSR-CCBC: Air Traffic Controller	AP English Lit & Comp ^C ECIHSR-CCBC: Air Traffic Controller
Aerospace Manager ECIHSR-CCBC: AEROSPACE MANAGEMENT	Principles of Business IT Fundamentals	AP US Government ^C Cybersecurity Marketing Financial Accounting ^C	AP English Lang & Comp ^C Business Mgmt & Ldrshp Managerial Accounting ^C ECIHSR-CCBC: Aerospace Manager	AP English Lit & Comp ^C AP Economics ^C Oral Communications ^C ECIHSR-CCBC: Aerospace Manager
Pilot (Professional, Commercial, Private) ECIHSR-CCBC: PROFESSIONAL PILOT	IT Fundamentals	Cybersecurity Computer Networking	AP English Lang & Comp ^C AP Physics 1 ^C ECIHSR-CCBC: Prof Pilot	AP English Lit & Comp ^C ECIHSR-CCBC: Prof Pilot
Construction Manager	Construction Cluster (Pkwy)	Carpentry (Pkwy) Business Mgmt & Ldrshp	Carpentry (Pkwy) CCBC: Constr Mgmt AP English Lang & Comp ^C AP Psychology ^C AP Physics 1 ^C	Carpentry (Pkwy) CCBC: Constr Mgmt Oral Communications ^C AP Economics ^C

The above chart provides recommended elective courses for career fields aligned to the 16 PA Career Clusters. Please keep in mind these are recommendations and not an exhaustive list. In addition to these recommendations, students are required to complete the core course requirements for graduation - 4 courses in each of the 4 core areas unless a student elects to attend PWCTC in which case they must successfully complete 4 courses in English & Math and 3 courses in Science & Social Studies. Courses denoted by ^C count as a core class. Please reference page 6 for a full list of core courses available by grade level in alignment with our graduation requirements.

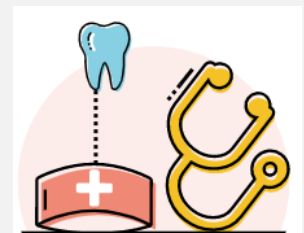


CAREER AND COLLEGE PATHWAYS

Health and Natural Sciences

Associated Careers

- Doctor
 - Anesthesiologist, Surgeon, Psychiatrist, Physical Therapist
- Nurse (RN)
- Nurse Practitioner
- Licensed Practical Nurse (LPN)
- Physician Assistant
- Surgical Technologist
- Massage Therapist
- Psychiatrist
- Therapist - Physical, Occupational, Music, Art, Radiation, Respiratory
- Speech-Language Pathologist
- Dentist/Orthodontist
- Pharmacist
- Veterinarian/Vet Assistant
- Phlebotomist
- Sports Medicine
- Exercise Science
- Athletic Trainer

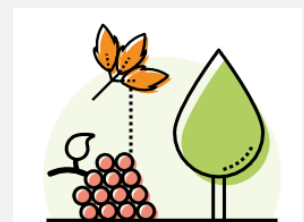


Health Science

Health Science

Associated Careers

- Biological Technician
- Clinical Research Coordinator
- Engineer - Water/Waste Water, Agricultural, Environmental
- Zoologist
- Biological Technician
- Pest Control Worker
- Recyclable Material Collector



Agriculture, Food
and Natural
Resource

Agriculture, Food & Natural Resource

Health and Natural Sciences

Example Careers CONNECTED WA PROGRAMS	RECOMMENDED COURSES			
	9	10	11	12
Nurse, Nurse Practitioner, Physician Assistant AP CAPSTONE DIPLOMA PROGRAM ECIHSA-CCAC: HEALTH SCIENCES PARKWAY: HEALTHCARE OCCUPATIONS TECHNOLOGY	Healthcare Occupations Technology (Pkwy)	AP Biology ^C AP Seminar ^C AP Calculus AB ^C Healthcare Occupations Technology (Pkwy)	AP English Lang & Comp ^C AP Research ^C AP Physics 1 ^C AP Calculus BC ^C AP Psychology ^C Healthcare Occupations Technology (Pkwy)	Oral Communications ^C Anatomy & Physiology ^C AP Chemistry ^C AP Statistics ^C Exercise Science ^C Funct Nutrition & Health ^C Health Sci Prog(CCAC)
Doctor AP CAPSTONE DIPLOMA PROGRAM ECIHSA-CCAC: HEALTH SCIENCES	Technology Skills	AP Biology ^C AP Seminar ^C AP Calculus AB ^C	AP English Lang & Comp ^C AP Research ^C AP Physics 1 ^C AP Calculus BC ^C AP Psychology ^C	Oral Communications ^C Anatomy & Physiology ^C AP Chemistry ^C AP Statistics ^C Exercise Science ^C Funct Nutrition & Health ^C Health Sci Prog(CCAC)
Licensed Practical Nurse PARKWAY: HEALTHCARE OCCUPATIONS TECHNOLOGY ECIHSA-CCAC: HEALTH SCIENCES	Healthcare Occupations Technology (Pkwy)	Healthcare Occupations Technology (Pkwy)	Healthcare Occupations Technology (Pkwy)	Funct Nutrition & Health ^C Health Sci Prog(CCAC)
Psychiatrist AP CAPSTONE DIPLOMA PROGRAM ECIHSA-CCAC: HEALTH SCIENCES	Technology Skills	AP Seminar ^C Partners in Phys Ed ^C	AP Research ^C AP Biology ^C Child Development 1	Partners in Explor Foods ^C AP Psychology ^C Anatomy & Physiology ^C Oral Communications ^C Funct Nutrition & Health ^C Health Sci Prog(CCAC)
Veterinarian/Vet Assistant PARKWAY: VETERINARY ASSISTANT TECHNOLOGY	Veterinary Assistant Technology (Pkwy)	Veterinary Assistant Technology (Pkwy)	Veterinary Assistant Technology (Pkwy)	AP Biology ^C Veterinary Assistant Technology (Pkwy)
Sports Medicine/ Athletic Trainer PARKWAY: SPORTS MEDICINE & REHAB THERAPY TECHNOLOGY ECIHSA-CCAC: HEALTH SCIENCES	Sports Medicine & Rehab Therapy Technology (Pkwy)	AP Biology ^C Sports Medicine & Rehab Therapy Technology (Pkwy)	Anatomy & Physiology ^C Sports Medicine & Rehab Therapy Technology (Pkwy)	Exercise Science ^C Funct Nutrition & Health ^C Health Sci Prog(CCAC)
Clinical Research Coordinator AP CAPSTONE DIPLOMA PROGRAM	Technology Skills	AP Seminar ^C Family & Com Relations	AP Research ^C AP Psychology ^C Creative Writing ^C	AP Chemistry ^C AP Biology ^C Journalism ^C

The above chart provides recommended elective courses for career fields aligned to the 16 PA Career Clusters. Please keep in mind these are recommendations and not an exhaustive list. In addition to these recommendations, students are required to complete the core course requirements for graduation - 4 courses in each of the 4 core areas unless a student elects to attend PWCTC in which case they must successfully complete 4 courses in English & Math and 3 courses in Science & Social Studies. Courses denoted by ^C count as a core class. Please reference page 6 for a full list of core courses available by grade level in alignment with our graduation requirements.

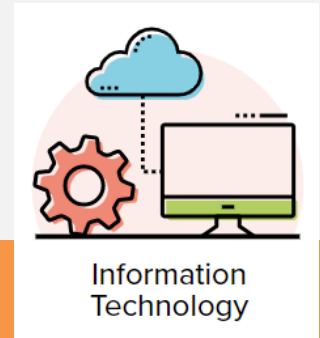


CAREER AND COLLEGE PATHWAYS

Information Technology

Associated Careers

- Computer Programmer
- Multimedia Game Designer/Programmer
- Cybersecurity & Networking Technologist
- Computer Network Architect
- Computer Systems Engineer
- Computer Network Support
- Web Administrator & Designer/Developer
- IT Project Manager
- Search Marketing Strategist
- Telecommunications Engineer Specialist
- Analyst -Information Security, Computer Systems, Intelligence, Cybersecurity



Information Technology

Information Technology

Example Careers CONNECTED WA PROGRAMS	RECOMMENDED COURSES			
	9	10	11	12
Cybersecurity Analyst ECIHS-A-RMU: CYBERSECURITY	AI Adventures IT Fundamentals AP Computer Science Prin ^C	Cybersecurity Intro to Data Analytics ^C AP Computer Science A ^C	Computer Networking Criminal Justice ^C	Corrections & Social Issues ^C Programming in C# & C++ ^C AP Economics ^C
Multimedia Game Designer/Programmer ECIHS-A-CCAC: MULTIMEDIA PROGRAMMING, SIMULATION & GAMING	IT Fundamentals Intro to Game Design Art 1 Media Arts AI Adventures	3D Modeling & Animation AP Computer Science Prin ^C Art 2 Ceramics 1	2D/3D Game Develop ^C AP Computer Science A ^C Art 3 Advanced Ceramics 2	Game Prod & Marketing ^C Virtual Reality ^C Programming in C# & C++ ^C Honors Art 3AP Drawing
Cybersecurity & Networking Technologist ECIHS-A-RMU: CYBERSECURITY PARKWAY: CYBER SECURITY & NETWORKING TECHNOLOGY	AI Adventures IT Fundamentals AP Computer Science Prin ^C Cyber Security & Networking Technology (Pkwy)	Cybersecurity AP Computer Science A ^C Cyber Security & Networking Technology (Pkwy)	Computer Networking Criminal Justice ^C Intro to Data Analytics ^C Cyber Security & Networking Technology (Pkwy)	Corrections & Social Issues ^C Programming in C# & C++ ^C AP Economics ^C Cyber Security & Networking Technology (Pkwy)
Web Administrator/Designer /Developer ECIHS-A-CCAC: MULTIMEDIA PROGRAMMING, SIMULATION & GAMING	IT Fundamentals AP Computer Science Prin ^C Intro to Game Design Art 1 Media Arts AI Adventures	Computer Networking 3D Modeling & Animation AP Computer Science A ^C Art 2	2D/3D Game Develop ^C Art 3	Game Prod & Marketing ^C Virtual Reality ^C Programming in C# & C++ ^C Honors Art 4 AP Drawing
Computer Programmer ECIHS-A-CCAC: MULTIMEDIA PROGRAMMING, SIMULATION & GAMING	IT Fundamentals AP Computer Science Prin ^C Intro to Game Design AI Adventures	Cybersecurity AP Computer Science A ^C 3D Modeling & Animation	Computer Networking Intro to Data Analytics ^C 2D/3D Game Develop ^C	Programming in C# & C++ ^C Game Prod & Marketing ^C Virtual Reality ^C
Information Technology Project Manager ECIHS-A-RMU: CYBERSECURITY	IT Fundamentals Principles of Business AP Computer Science Prin ^C AI Adventures	Cybersecurity Business Mgmt & Ldrshp AP Computer Science A ^C	Computer Networking Criminal Justice ^C Intro to Data Analytics ^C	Corrections & Social Issues ^C Programming in C# & C++ ^C Business, Law, & Society ^C
Intelligence Analyst ECIHS-A-RMU: CYBERSECURITY ECIHS-A-RMU: CRIMINAL JUSTICE & PRELAW	IT Fundamentals Principles of Business AP Computer Science Prin ^C AI Adventures	Cybersecurity AP Computer Science A ^C Business, Law, & Society ^C	Computer Networking Criminal Justice ^C Intro to Data Analytics ^C	Corrections & Social Issues ^C Programming in C# & C++ ^C AP Economics ^C

The above chart provides recommended elective courses for career fields aligned to the 16 PA Career Clusters. Please keep in mind these are recommendations and not an exhaustive list. In addition to these recommendations, students are required to complete the core course requirements for graduation - 4 courses in each of the 4 core areas unless a student elects to attend PWCTC in which case they must successfully complete 4 courses in English & Math and 3 courses in Science & Social Studies. Courses denoted by ^C count as a core class. Please reference page 6 for a full list of core courses available by grade level in alignment with our graduation requirements.